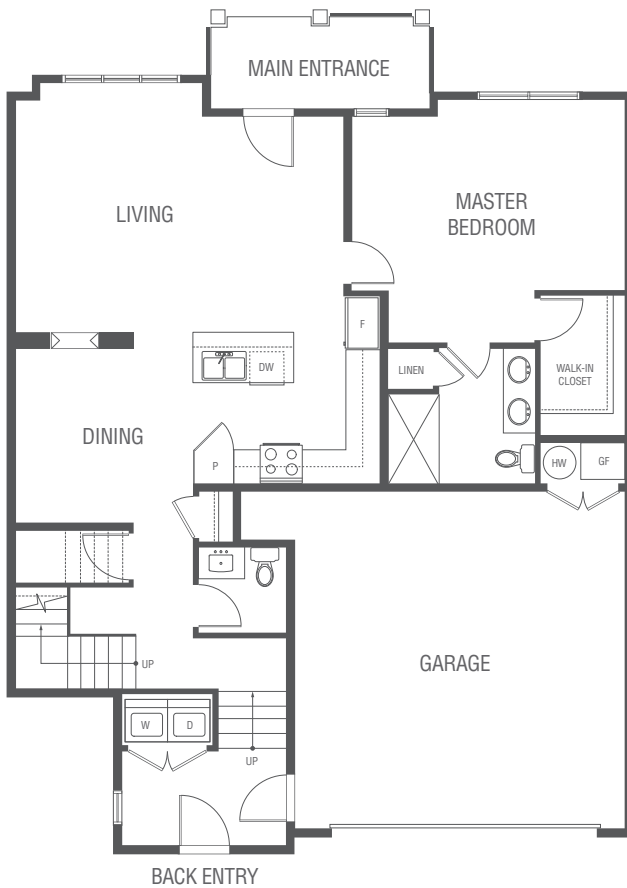


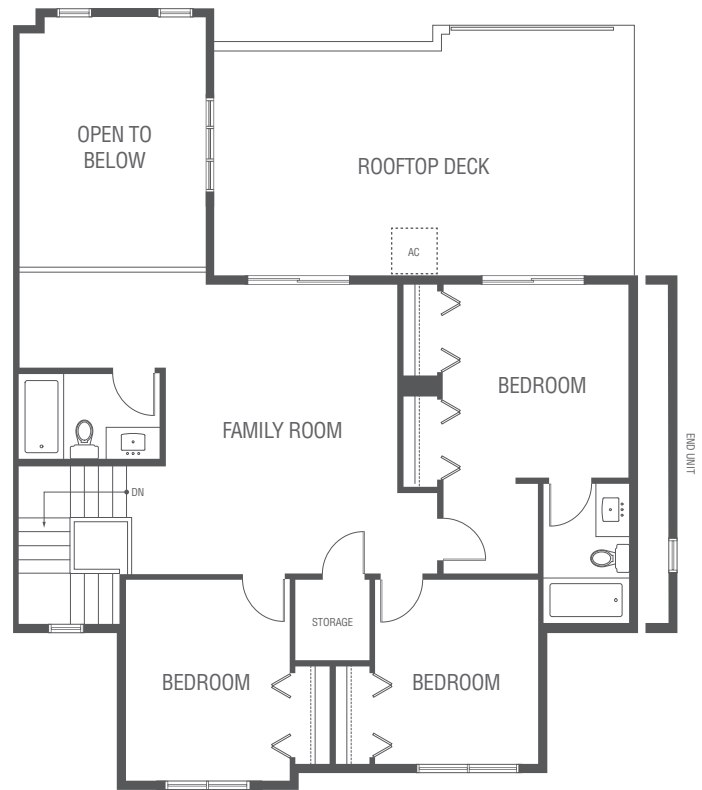
# PLAN P

4 BED, 3.5 BATH  
2,177 - 2,250 SF

Unique bright and airy 2 level master on main home. Live on the main or on both levels featuring traditional layout with island kitchen and separate living and dining rooms. Upper level boasts 3 additional bedrooms, a family room and private roof deck. Perfect for family gatherings and entertaining.



LOWER



MAIN

In our continuing effort to improve and maintain the high standard of the Hazelwood development, the developer reserves the right to modify or change plans, specifications, features and prices without notice. Materials may be substituted with equivalent or better at the developer's sole discretion. All dimensions and sizes are approximate and are based on architectural measurements. As reverse, flipped, and/or mirrored plans occur throughout the development please see architectural plans for unit layout if material to your decision to purchase. Illustrations, renderings, vignettes, and marketing materials provided are an artist's conception and are intended as a general reference only, not to be relied upon as they are subject to change without prior notice. Please ask one of the helpful sales staff to reference the most recent set of architectural set of construction drawings for most up to date dimensions, layouts, and other details. Please refer to disclosure statement for specific offering details. E. & O. E